



## 2 Hop Kiln Weydon Lane , Farnham, GU9 8QH

A character ground floor 2 bedroom flat in a converted hop kiln situated within a mile of Farnham Town. The property has it's own enclosed private paved garden and an allocated parking space. No onward chain.

**Price Guide £250,000**

## 2 Hop Kiln Weydon Lane , Farnham, GU9 8QH



- Communal entrance hall with entry phone system
- Kitchen
- Private enclosed paved garden
- Close to Farnham town, station and schools
- Entrance hall
- 2 bedrooms
- Gas heating system
- Open plan sitting / dining room
- Bathroom
- Allocated parking space



### Directions

From Farnham town proceed down to the bottom of South street. At the traffic lights turn right onto the A31. At the traffic lights turn left onto Weydon Lane proceed over the bridge where Hop kiln will be found on the left hand side.

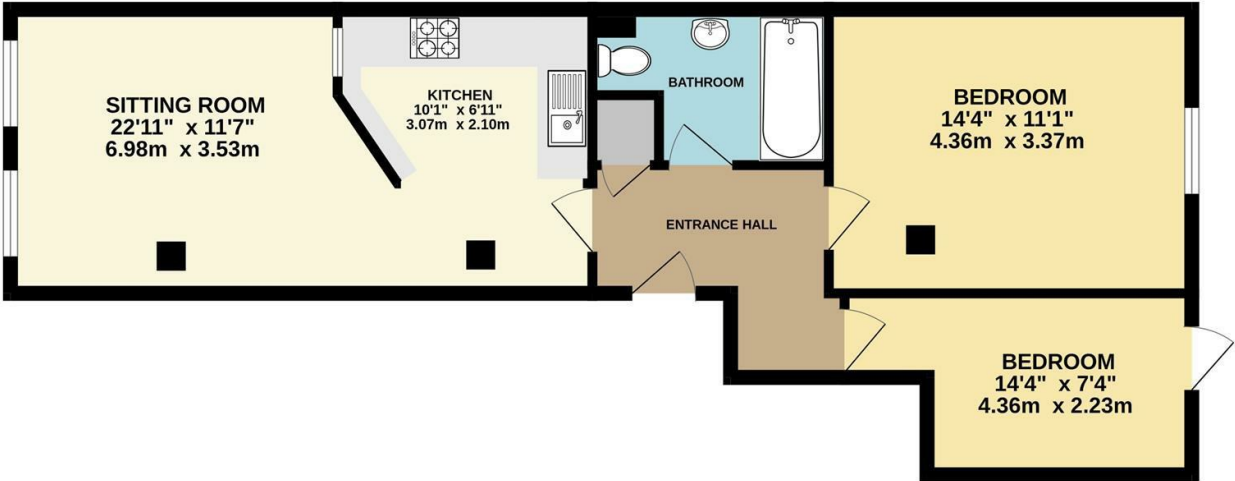






Floor Plan

GROUND FLOOR  
616 sq.ft. (57.2 sq.m.) approx.



TOTAL FLOOR AREA : 616 sq.ft. (57.2 sq.m.) approx.  
Whilst every attempt has been made to ensure the accuracy of the floorplan contained here, measurements of doors, windows, rooms and any other items are approximate and no responsibility is taken for any error, omission or mis-statement. This plan is for illustrative purposes only and should be used as such by any prospective purchaser. The services, systems and appliances shown have not been tested and no guarantee as to their operability or efficiency can be given.  
Made with Metropix ©2024.



These particulars, whilst believed to be accurate are set out as a general outline only for guidance and do not constitute any part of an offer or contract. Intending purchasers should not rely on them as statements of representation of fact, but must satisfy themselves by inspection or otherwise as to their accuracy. No person in this firms employment has the authority to make or give any representation or warranty in respect of the property.

